
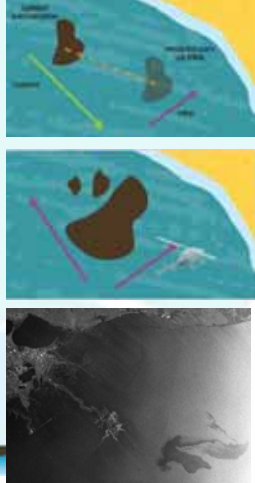


Initial Response

- Aerial Surveillance
- Modelling report
- Satellite Imagery
- Environmental Sensitivity Index
- Shoreline surveys
- Offshore response

© Copyright 2014. Oil Spill Response Limited.

Tiered Preparedness and Response

The diagram is a circular chart with 'IMS' at the center. It is divided into several segments, each representing a different response tier or activity:

- *SOURCE CONTROL** (Yellow box)
- SURVEILLANCE, MODELING, AND VISUALIZATION** (Yellow box)
- OFFSHORE SURFACE DISPERSANTS** (Yellow box)
- OFFSHORE SUBSEA DISPERSANTS** (Yellow box)
- IN-SITU CONTROLLED BURNING** (Text label)
- AT-SEA CONTAINMENT AND RECOVERY** (Yellow box)
- PROTECTION OF SENSITIVE RESOURCES** (Yellow box)
- SHORELINE CLEANUP ASSESSMENT TECHNIQUE** (Yellow box)
- SHORELINE CLEANUP** (Yellow box, circled in red)
- INLAND RESPONSE** (Text label)
- *WASTE MANAGEMENT** (Text label)
- *STAKEHOLDER ENGAGEMENT AND COMMUNICATION** (Text label)
- *ECONOMIC ASSESSMENT AND COMPENSATION** (Text label)
- *ENVIRONMENTAL IMPACT ASSESSMENT (INCL. SAMPLING)** (Text label)

© Copyright 2014. Oil Spill Response Limited.

Key steps



© Copyright 2014, Oil Spill Response Limited.

5



SCAT

“A process to **systematically survey** oiled shorelines in **dedicated field teams** using **common terminology** and protocols to ensure uniformity. A key function of SCAT teams are to **recommend treatment plans** for oiled shores but not make the final decisions on what is carried out.”



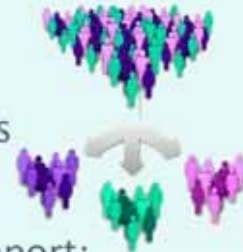
© Copyright 2014, Oil Spill Response Limited.

6



5 Principles of SCAT

- **Systematic** survey
- Shoreline **division** into segments
- **Standardized** terms and definitions
- Team of **inter-agency** personnel
- **Management** and **operational** support:
 - Operational priorities
 - Treatment guidelines
 - End point criteria
 - Sign off process



© Copyright 2014, Oil Spill Response Limited.

7

Pre-Spill SCAT segment survey form (page 1)

Pre-Spill SCAT segment survey form (page 2)

INCIDENT NAME
Shoreline Treatment Recommendation
Operational Permit to Work

Shoreline Citing Summary (SCS)

INCIDENT NAME
Shoreline Treatment Recommendation
Operational Permit to Work

GENERAL INFORMATION

SEGMENT INSPECTION REPORT

EDUCATION

STAFF

DATE OF SURVEY

INSPECTION COMPLETED ALONG SHORE SEGMENT?

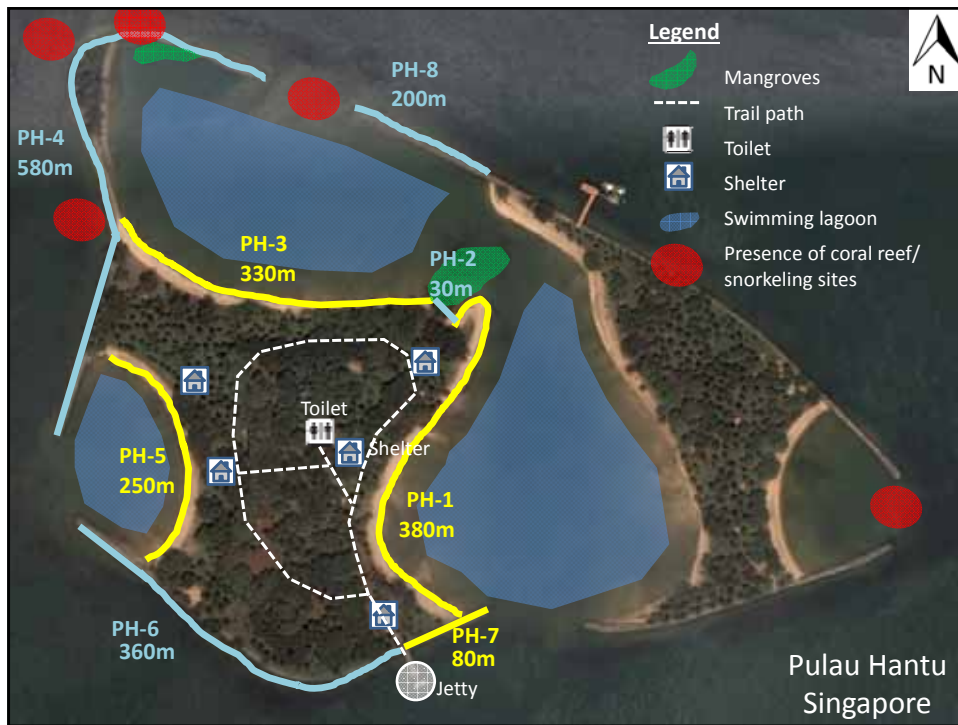
SCAT Team

Treatment End-point Criteria:

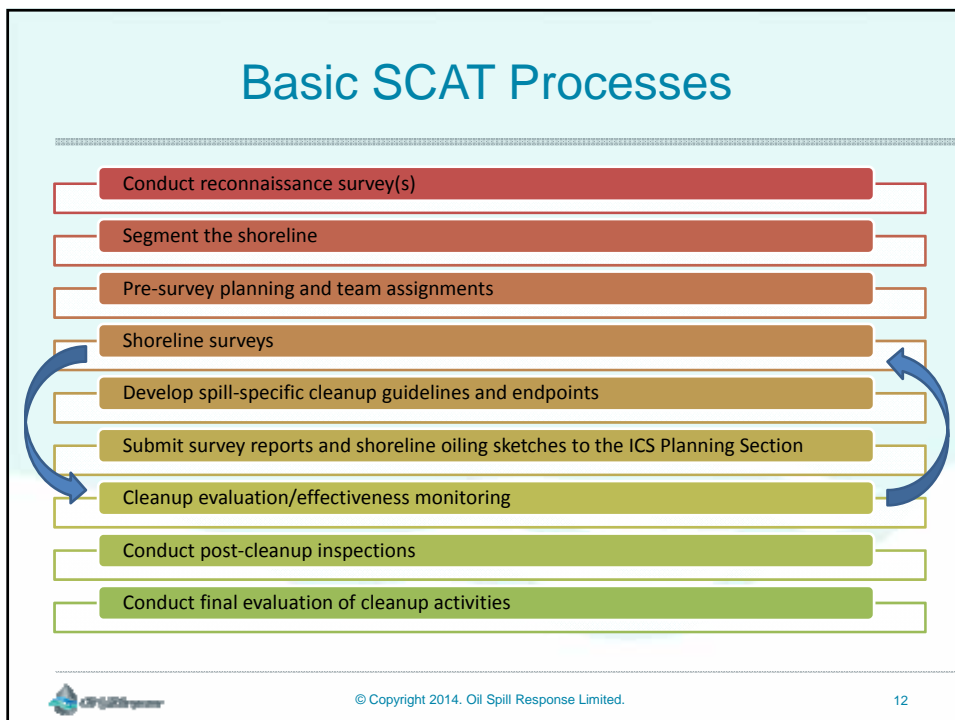
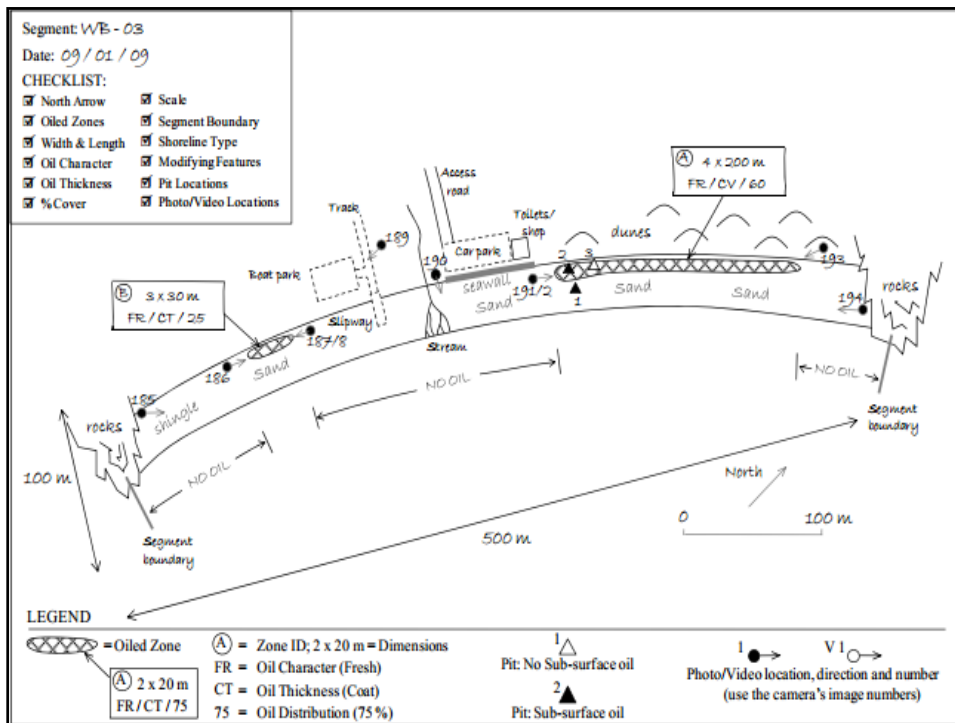
ATTACHMENTS

APPROVAL

COMMENTS



Characteristic	Description	Example	Characteristic	Description	Example	Characteristic	Description	Example		
Unwashed	Accumulation (including >1cm)		SAP Subsurface Asphalt Pavement	Cohesive mixture of weathered oil and sediment situated completely below a surface sediment layer (record thickness)		OP Oil-Filled Pores	Pore spaces in the sediment matrix are completely filled with oil; often characterised by oil flowing out of the sediments when disturbed		PP Partially Filled Pores	Pore spaces filled with oil, but generally does not flow out when exposed or disturbed
Weathered	≤0.01cm thick, scratched		OR Oil Residue as a Cover	0.1-1cm or Coat - 0.01-0.1cm of oil on sediments and/or pore spaces partially filled with oil. It can be scratched off easily on coarse sediments or bedrock		OF Film or Stain	<0.01cm of oil residue on the sediment surfaces. Non-cohesive. It cannot be scratched off easily on coarse sediments or bedrock		TR Trace	Discontinuous film or spots of oil on sediments, or an odour or tackiness with no visible evidence of oil



Response Phases

- ▶ **Reactive Phase**
 - Prepare SCAT plan
 - Segmentation and shoreline surveys
- ▶ **Planning Phase**
 - Response objectives and priorities
 - End point criteria, treatment plans
- ▶ **Operational Phase**
 - Treatment and re-survey
- ▶ **Termination Phase**
 - Sign off and close out



Why SCAT?



#1
Effective response planning and
prioritisation for a shoreline
response program





Source: Alaska Resources Library & Information System

Why SCAT?



#2
Potential for under- or over-
utilisation of resources



© Copyright 2014, Oil Spill Response Limited.

17



Source: OSRL

Why SCAT?



#3

Reduce potential for negative environmental impacts due to excessive treatment



© Copyright 2014, Oil Spill Response Limited.

19



Source: <http://www.wnactionnews.com>



Who Is Involved

Individual with
oil spill
experience and
shoreline
assessment
training



Source: OSRL

Who Is Involved

Individual familiar with the coastal ecology of the affected area



© Copyright 2014. Oil Spill Response Limited.

23

Who Is Involved


► Environmental Specialist/
Archaeologist/ other specialists

► Representative from the shoreline response centre / coordination centre/ authorities




© Copyright 2014. Oil Spill Response Limited.

24



Oil Spill Response



Case Study

© Copyright 2014, Oil Spill Response Limited. 25

Spill Location

● La Brae, Trinidad



© Copyright 2014, Oil Spill Response Limited. 26

Terrain



© Copyright 2014, Oil Spill Response Limited.

27

Main Strategies

- Site assessments and aerial surveillance to aid delineation and prioritisation of spill sites.



© Copyright 2014, Oil Spill Response Limited.

28

Main Strategies

- Recommend and implement clean up methods



Source: OSRL



© Copyright 2014, Oil Spill Response Limited.

29

Main Strategies

- Improvements



Source: OSRL



© Copyright 2014, Oil Spill Response Limited.

30

Challenges

Booming



Source: OSRL



© Copyright 2014, Oil Spill Response Limited.

31

Challenges

Pitch or Oil or Moss or Sediment?



Source: OSRL



© Copyright 2014, Oil Spill Response Limited.

32

Challenges

📍 Mangroves



Source: OSRL



© Copyright 2014, Oil Spill Response Limited.

33

Challenges

📍 Secondary contamination



Source: OSRL



© Copyright 2014, Oil Spill Response Limited.

34

Challenges

🔹 Buried Oil



Source: OSRL



© Copyright 2014. Oil Spill Response Limited.

35

Challenges

🔹 Sunken Oil



Source: OSRL



© Copyright 2014. Oil Spill Response Limited.

36

Challenges

Debris & Waste



© Copyright 2014, Oil Spill Response Limited.

37

Challenges

Welfare



© Copyright 2014, Oil Spill Response Limited.

38

Challenges

Wildlife



Source: OSRL



© Copyright 2014, Oil Spill Response Limited.

39

Challenges

Logistics



Source: OSRL



© Copyright 2014, Oil Spill Response Limited.

40

Challenges

Media/Visitors



Source: OSRL



© Copyright 2014, Oil Spill Response Limited.

41

Challenges

Workforce/Local People



Source: OSRL



© Copyright 2014, Oil Spill Response Limited.

42



